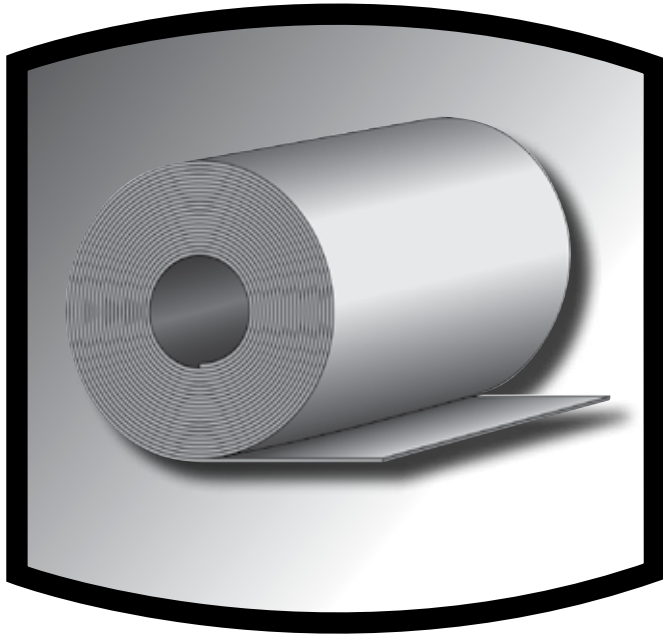


Firestone Coil & Sheet Reference Guide



Master Coil

Firestone Building Products is pleased to offer a full line of mill finish products. For additional information, please contact your sales representative.

www.firestonebpco.com



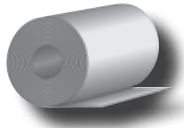
Flat Sheet



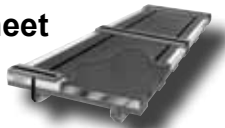
Slit Coil

Firestone
BUILDING PRODUCTS
NOBODY COVERS YOU BETTER.™

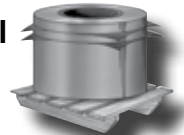
**Master
Coil**



**Flat
Sheet**



**Slit
Coil**



	Galvanized	Galvanized	Galvanized	Galvannealed	Bonderized	Stainless Steel	Stainless Steel	Aluminized	Cold Rolled
Gauge x Width	G90	G60	G40			304 ^{2B}	304 #4		
12 ga x 36"	•			•					
14 ga x 36"	•			•					•
16 ga x 36"	•			•					•
18 ga x 36"	•			•					•
20 ga x 36"	•			•				•	•
22 ga x 36"	•			•					
24 ga x 36"	•		•						
26 ga x 36"	•	•	•						
28 ga x 36"			•						
30 ga x 36"									
8 ga x 48"	•								
10 ga x 48"	•			•					
11 ga x 48"	•			•					•
12 ga x 48"	•			•		•	•	•	•
14 ga x 48"	•			•		•	•	•	•
16 ga x 48"	•			•		•	•	•	•
18 ga x 48"	•	•		•		•	•	•	•
20 ga x 48"	•	•		•		•	•	•	•
22 ga x 48"	•	•	•	•	•	•	•	•	
24 ga x 48"	•	•	•	•	•	•	•		
26 ga x 48"	•	•	•	•	•	•			
28 ga x 48"		•	•						
30 ga x 48"									
10 ga x 60"	•								
11 ga x 60"				•					
12 ga x 60"	•			•		•		•	•
14 ga x 60"	•			•		•		•	•
16 ga x 60"	•			•			•	•	•
18 ga x 60"	•	•		•		•		•	•
20 ga x 60"	•	•		•				•	•
22 ga x 60"	•	•		•					
24 ga x 60"	•	•		•					
26 ga x 60"	•	•							

Aluminum	
Thickness x Width 3000 Series	
.032 x 48"	•
.040 x 48"	•
.050 x 48"	•
.063 x 48"	•
.080 x 48"	•
.090 x 48"	•
.125 x 48"	•

Firestone Building Products

250 W. 96th Street
Indianapolis, IN 46260
www.firestonebpc.com
1-800-428-4442 • 317-575-7000

1001 Lund Blvd.
Anoka, MN 55303
1-800-426-7737 • 763-576-9595

Steel

- Galvanized
- Galvannealed
- Bonderized
- Galvalume Plus
- Stainless
- Aluminized
- Cold Rolled

Copper

- AGSC:
- 16oz., 20oz.
- Standard:
- 12oz., 16oz., 20oz.

Aluminum

- 3000 Series
- 5005-H34Q

Fabrication

- Shearing
- Cut-to-length
- Slitting
- Embossing

Facilities

- Anoka, MN
- Warren, MI
- College Park, GA

Note:
Protective film must be removed immediately after installation.



Printed on Recycled Paper